



---

## **WELCOME GUIDE**

---

## Department of International Cooperation

---

### **Postal Address:**

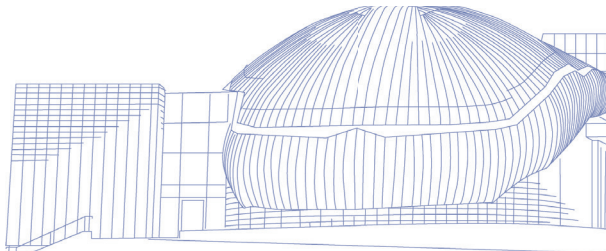
al. Powstańców Warszawy 12  
35-959 Rzeszów  
Poland

### **Visiting address:**

building V, 2<sup>nd</sup> floor, room no. 213 and 214  
al. Powstańców Warszawy 12  
35-959 Rzeszów  
Poland

### **Opening hours:**

Mon – Fri: 7:15 am – 3:15 pm



## Team:

- **Edyta Ptaszek**  
MA: tel. 0048 17 743 2505, epta@prz.edu.pl,  
Head of the Department of International Cooperation;
- **Joanna Ruszel**  
MA: tel.: 0048 17 743 2149, jruszel@prz.edu.pl,  
Erasmus+ outgoing students (studies) and outgoing staff;
- **Monika Stanisz**  
MA: tel.: 0048 17 865 1282, monikas@prz.edu.pl,  
Erasmus+ outgoing students (placements), incoming staff,  
EEA and Norway Grants;
- **Konrad Marciniak**  
MA: tel. 0048 17 743 2162, k.marciniak@prz.edu.pl,  
Foreign business travel service;
- **Maria Warzybok – Lech**  
MA: tel. 0048 17 743 2545, m.warzybok@prz.edu.pl,  
Recruitment of foreign students Full-time studies  
and student internships (Erasmus +);
- **Katarzyna Kadaj-Kuca**  
MA: tel. 0048 17 743 2207, k.kadaj@prz.edu.pl,  
Recruitment of foreign students Full-time studies.



# 1. Welcome to Rzeszow University of Technology

---

Thank you for considering the Rzeszow University of Technology as the host for your student exchange. This guide has been especially designed for foreign students who intend to temporarily study at the Rzeszow University of Technology in an exchange programme.

We hope that this guide will help to make your stay at the University both fruitful and enjoyable. Should any questions still remain unanswered after reading this guide, please do not hesitate to turn to one of the contact persons listed.

We wish you a pleasant stay in Rzeszow at the Rzeszow University of Technology.

*Department of International Cooperation*

## Poland in Brief

1. Area: 322 575 km<sup>2</sup>
2. Population: 38 000000
3. Capital: Warsaw
4. Language: Polish
5. Religion: Roman Catholic: 86.8%
6. Climate: Interim Temperate (Continental)



## 2. The city of Rzeszow

---

Rzeszow is the biggest city in southeastern Poland with the population of 182,548. It is located on both sides of the Wislok River, in the heartland of the Sandomierska Valley. The city, which was granted a town charter in 1354, has been the capital of the Subcarpathian Voivodeship since 1999 and it is also the seat of Rzeszow County.

Rzeszow is served by an international airport and it is a member of Eurocities. It is also home to a number of higher education schools, universities, company headquarters.

Rzeszow is a very pleasant and safe town to live in. It has a number of museums, galleries, the concert hall, theatres, cinemas and libraries.

It offers a wide variety of cafes, pubs, restaurants, bars and sports centers.

Main sights:

- the palace of Lubomirski Family (18<sup>th</sup> century),
- the main square,
- the Town Hall, established in 1591,
- the Small (17<sup>th</sup> century) and Great (18<sup>th</sup> century, restored 1954–63) Synagogue,
- the Lancut castle (close to Rzeszow),
- the Underground tunnel.



## How to get there

---

### Transit

Rzeszów is located on the main West-East European E40 Highway, which goes from Calais in France via Belgium, across Germany, Poland, Ukraine and onto Russia and Kazakhstan. The highway A4 was built as a beltway of the city, running through the northern districts of Rzeszów.

### Airport

Rzeszów-Jasionka Airport (Pol: *Port Lotniczy Rzeszów-Jasionka*) is located in the village of Jasionka 10 km north of the city. Regular scheduled passenger services are offered by Ryanair, LOT Polish Airlines, EuroLOT, and Lufthansa. This is supplemented seasonally by tourist charter flights to typical summer leisure destinations.

### Buses

The city operates 60 bus lines including night and airport buses. Rzeszów is also a gateway to the Bieszczady mountains, with many buses heading for Sanok.

### Railways

Rzeszów is an important rail hub on the main West-East rail route; Line 91. This runs from Silesia and Krakow to Medyka on the Polish eastern border. This line then continues on to Ukraine. The main railway station in Rzeszów was established in the 19th century and apart from it, there are five additional stations in the city. There are also two non-electrified lines stemming from Rzeszów – to Jasło and to Tarnobrzeg.





### 3. Rzeszow University of Technology

---

The history of Rzeszow University of Technology dates back to 1951. Presently, the University is the largest polytechnic in the region and continues to grow. Over its history it has educated 85 500 graduates, including 741 pilots. A great number of alumni hold important positions both in the region and the country. As a matter of course, the development of the University has been accompanied by the continual increase in the number of academic staff and independent scientists.

The University is composed of 6 faculties:

The Faculty of Civil and Environmental Engineering and Architecture

The Faculty of Mechanical Engineering and Aeronautics

The Faculty of Electrical and Computer Engineering

The Faculty of Chemistry

The Faculty of Maths and Applied Science

The Faculty of Management

The Faculty of Mechanics and Technology

There are about 14 000 students at 7 faculties and 28 courses of study. Three faculties: the Faculty of Civil and Environmental Engineering and Architecture, the Faculty of Mechanical Engineering and Aeronautics and the Faculty of Electrical and Computer Engineering have the right to confer a university degree of PhD in Technology, and the Faculty of Chemistry - PhD in Chemistry. The Faculty of Mechanical Engineering and Aeronautics, the Faculty of Electrical and Computer Engineering and the Faculty of Civil and Environmental Engineering and Architecture have the right to confer a university degree of DSc. The Faculty of Mechanical Engineering and Aeronautics, as the only one in Poland, has been training civil aviation pilots since 1976. Pilots receive an MSc in Aeronautical Engineering and a 2<sup>nd</sup> Class (CPL) pilot's licence. Their training meets European requirements for receiving an airline pilot licence (ATPL) and is conducted at Jasionka (aviation) and Bezmiechowa (gliders).

The University participates in the Erasmus+ programme and maintains bilateral exchanges both university-wide and for particular faculties. Apart from research, the University takes part in regional affairs and development schemes. Forecasting the demands of the nation's economy, the University provides a rich syllabus adapted to the realities and demands of the marketplace.

## Selection of courses and language of instruction

All of the faculties offer courses in English. For the lists of English courses available for Erasmus+ students please visit our website:

<https://dwm.prz.edu.pl/en/erasmus/student/courses-in-english>

Grading system:

ECTS GRADE	LOCAL GRADE	DEFINITION
A	5.0	VERY GOOD
B	4.5	GOOD PLUS
C	4.0	GOOD
D	3.5	SATISFACTORY
E	3.0	SUFFICIENT
F	2.0	UNSATISFACTORY
Pass	Zal.	CREDITED WITHOUT MARKS

*ECTS credits: 1 full academic year = 60 credits; 1 semester = 30 credits*



## Academic calendar

---

Winter semester: beginning of Oct. – the end of Jan.

Winter examination period: the end of Jan. – middle of Feb.

Winter break: middle of Feb. – the end of Feb.

Summer semester: the end of Feb. - middle of Jun.

Summer examination period: middle of June - middle of Jul.

Summer break: middle of July – the end of Sep.

## Library

---

The Main Library is completely automated and students use their own online accounts to reserve and check out the availability of books.

The Library has the largest technical book collection in southeastern Poland, comprising 161 000 books, 200 000 technical standards, catalogues, certificates, etc.; 37 000 magazines, and 12 500 online periodicals. There is an extensive collection of literature covering: chemistry, mechanical engineering, architecture, civil engineering, electrical engineering, computer science, aviation, marketing, environmental protection, management and humanities.

An Office of Emigration Literature was created in 1992 to collect and lend books and periodicals printed abroad after 1<sup>st</sup> Sept. 1939.



---

## National Holiday

---

January 1  
January 6  
Easter Monday  
May 1  
May 3  
August 15  
November 1  
November 11  
December 25 and 26



---

## Additional Courses

---

The following additional courses are available for Erasmus students:

**Polish Language Course:** run by the Department of Foreign Languages through winter and summer semester – free of charge (2 ECTS points).

**English Language Course:** run by the Department of Foreign Languages through winter and summer semester – free of charge (3 ECTS points – with an exam at the end of the course, or 2 ECTS points – with no exam at the end of the course). Please check with the Foreign Affairs Office for other foreign language options.

**Physical Education:** run by the Department of Physical Education and Sports through winter and summer semester – free of charge (2 ECTS).

## Student Organizations

---

### **Erasmus Student Network (ESN PRz Rzeszów)**

Erasmus Student Network Poland is a part of the biggest student organization in Europe. Its main objective is to support and promote the mobility within international exchange programmes such as Erasmus+. Local sections gather students who are focused on making life in a foreign country easier for Erasmus students.

<https://www.facebook.com/esn.PRz/>

### **International Project's Association in Rzeszów (INPRO)**

We are a youth oriented association dedicated to the personal development and education of young people from Rzeszów and Podkarpackie voivodship. Through our projects and activities, we strive to attract people, not only of different cultural backgrounds but also of different origins, ages as well as opinions and beliefs.

### **The Student Council**

The Student Council is composed of representatives from across the University who are elected to sit on Faculty Councils and in the Senate. They deal with problems affecting the student body and campus. They also foster cultural and social life on campus through hosting numerous events, notably camping trips for incoming freshmen and exchange students to help them get accustomed to life at the University. To foster ties with the local community, they organize charity events, educational and job fairs and events with students from other universities.

### **Student Scientific Organizations**

There are 55 organizations on campus which bring together nearly 500 students with the aim of developing their interests in scientific endeavors. A wide range of activities take place throughout the academic year, the most spectacular being national symposiums where they can be awarded for their research and achievements as well as science camps, trade fairs, exhibits and fun-themed trips where students compete at being creative. Additionally, an annual journal is issued which covers all student scientific papers.





## Academic Sports Association

---

The Association was established in 1963 and its aim is to promote physical education and provide access to sport and recreation on campus. Students can now participate in the following:

- aerobics
- indoor and outdoor football
- horse-riding
- canoeing
- karate
- chess
- cycling
- coed basketball and volleyball
- athletics
- swimming
- paragliding
- table tennis
- windsurfing
- sailing

The Association warmly invites any students interested in participating in sports and recreation activities to drop by the facilities and learn more.



POLITECHNIKA  
RZESZOWSKA

im. IGNACEGO

WICZA

15



## **The “Połoniny” Student Song and Dance Ensemble**

---

“Połoniny” is the artistic ensemble representing the University and the city of Rzeszów. It is currently comprised of over 100 members (most of whom are students) in 4 dance groups, a vocal group, and a folk band. Their impressive repertoire includes local, regional and national dances and songs of a traditional and folk variety. The group has given more than 1600 concerts and had their TV and radio programmes broadcast around the globe for 36 years. It has won numerous prizes in folk festivals worldwide, contributing to its reputation as one of the leading folk ensembles in Poland. The group regularly performs throughout Europe, Israel, Turkey as well as the USA.

## **Academic Radio and TV station CENTRUM**

---

The beginning of the academic broadcasting station activity goes back to 1970 when a few student radio centres operating on the campus joined together to form one radio centre named the Student Radio Rzeszów “Centrum”. In 1994 it became the first commercial radio station in Rzeszów. The station can be found on 89,0 FM and has a 100W transmitter, sending a clear signal up to 40 km around the city. It is the most popular radio station in Rzeszów, especially among listeners under the age of 30. In 2004 the radio station incorporated the Academic Television “Centrum” which is aired on cable. Its programmes are designed to disseminate information among the University community.

## **Academic Choir**

---

The choir was founded in November 2009. It is mainly attended by students of the Rzeszów University of Technology. They are people who are close to music. The band can boast of many successes achieved at festivals and choral music competitions.



## 4. Application

---

The application deadlines are:

- for the winter semester: 1<sup>st</sup> June,
- for the summer semester: 31<sup>st</sup> October.

Important:

- The application documents **MUST** be filled in on a computer,
- Do not send the documents by fax, the originals are needed to start the acceptance procedures,
- Any changes to the Learning Agreement can be done not later than 2 weeks after the semester begins.

The application documents:

1. Application form including accommodation.
2. Learning Agreement.
3. Transcript of Records in English.

Changes to Learning Agreement (to be filled in **ONLY** if appropriate)

The forms should be completed, signed by the departmental and institutional coordinator and sent together with a Transcript of Records to the Foreign Affairs Office:

**Monika Stanisz**

Department of International Cooperation  
al. Powstańców Warszawy 12  
35-959 Rzeszów  
Poland

After checking your application, we will send a Letter of Acceptance and signed Learning Agreement to the Erasmus coordinator at your university.

**For updates on the application process please visit the website of the Department of International Cooperation.**

---

## Accommodation

---

Rzeszow University of Technology campus includes 6 students' dormitories: Akapit, Alchemik, Ikar, Nestor, Pingwin and Promień, providing accommodation for ca. 2.5 thousand of students. All dormitories are well-furnished and well-equipped. The rooms have internal and external telephone communication systems and the Internet access. In the dormitories there are gyms, laundries, shops. The dormitories are surrounded by green areas suitable for rest and recreation.

The safety of the residing students is guaranteed through monitoring the facilities and providing a professional security service. Students are responsible for keeping rooms clean.

Erasmus+ Programme students can find their places at Ikar or Alchemik dormitories or rent private lodgings.

Students who are coming only for the winter semester will be provided accommodation starting from 25<sup>th</sup> September till no longer than 15<sup>th</sup> February. Students coming for the summer semester will be accommodated from 20<sup>th</sup> February.

All incoming students are guaranteed a place in the dormitory. However, accommodation will be provided according to the type of rooms available at the time of application. The university does not guarantee single rooms to all students.

Monthly rent varies from 100 to 120 Euro, depending on the type of a room. Upon their arrival students are also required to pay 50 Euro refundable deposit.



## 5. Useful information

---

### Climate

Climate in Poland is influenced by a continental climate from the east and a maritime climate from the west. The daily temperature in spring ranges from 5°C to 15°C. The summer, with temperatures above 20°C, begins in May and is about four months long. In autumn the average temperature drops to between 5°C and 15°C. During winter the average daily air temperature ranges from 0°C to 5°C, but sometimes it's under 0°C (even: -15-20°C).

### Drinking water

The water is safe and drinkable throughout the country.

### Electricity

Current is 220V, 50 Hz

### Currency

The Polish Zloty is the currency in Poland (PLN). The symbol for PLN can be written as zł. The Polish Zloty is divided into 100 groszy. 1€ is over 4 Polish zloty.

### Credit card services

Eurocard, MasterCard, Visa, American Express as well other cards are widely accepted in shops, hotels and restaurants.

### Cost of living

Cost of accommodation, meals and travel:

- accommodation in a dormitory – PLN 220-280
- monthly private lodgings – PLN 500-800
- monthly dinner in the city centre – PLN 20-30
- breakfast and supper (at home) – PLN 10-15
- bus tickets: monthly student ticket – PLN 35-49
- full-fare single ticket – PLN 3.6
- student-fare single ticket – PLN 1.4





### Prices of some food products:

- milk – PLN 2.5-3.00/l.
- bread – PLN 3.50/loaf
- bun – PLN 0.70 - 1.00
- butter – PLN 5.00-7.00/packet
- cottage cheese – PLN 13.00/kg
- hard cheese – PLN 20.00-40.00/kg
- egg – PLN 1.00
- rice – PLN 7.20/kg
- potatoes – PLN 3.00/kg
- bananas – PLN 4.50/kg
- oranges – PLN 5.00/kg
- apples - PLN 3.00/kg

Food prices may be different depending on a shop and a season of the year. Most food shops are open Monday to Friday from 6:00 until 18:00 and on Saturdays from 8:00 until 14:00. Shops are open on the last Sunday of the month.

## Insurance

---

Polish students are provided with free medical care. Foreign students, including Erasmus+ Programme students, have to take out an insurance policy valid all over Poland (European Health Insurance Card). If not, all the health care costs are covered by the student.





## Useful phrases in Polish

<b>Polish word</b>	<b>English word</b>
Dzień dobry	Good morning
Do widzenia	Goodbye
Cześć	Hello, Hey
Do zobaczenia	See you later
Nazywam się...	My name is...
Jak się nazywasz?	What is your name?
Proszę	Please
Dziękuję	Thank you, Thanks
Tak/Nie	Yes/No
Czy to daleko?	Is it far?
Gdzie jest ulica...?	Where is...
Przepraszam, jak dojść do...?	Excuse me, how can I get to...?
Gdzie można kupić bilety?	Where can I buy / get a ticket?
Ile kosztuje bilet do...	How much is the ticket to...
Przepraszam, gdzie jest toaleta?	Excuse me, where is the toilet?
Która jest godzina?	What time is it?
Jak mogę się podłączyć do internetu?	How can I log on the Internet?
Gdzie mogę znaleźć lekarza?	Where can I find a doctor?
Proszę wezwać lekarza	Call the doctor, please!
Jestem chory	I'm not well. / I'm sick. / I'm ill.
Czy mówi Pan/Pani po angielsku / polsku?	Do you speak English / Polish?
Nie rozumiem	I don't understand



POLITECHNIKA  
RZESZOWSKA  
www.pwrz.pl

POLITECHNIKA  
RZESZOWSKA  
1958

## Leisure activities

---

Rzeszów is the place of many sports facilities, cultural places and students organizations. Below you can find the list of most interesting ones:

### Swimming pools

There are many swimming pools around the city. Many of them are newly built, for example Karpik, Muszelka, Muszelka or Fala. Besides swimming, they offer a jacuzzi and slides. There are also similar objects in the cities surrounding Rzeszów: Strzyżów, Głogów Małopolski, Nowa Wieś, Łańcut, Sokołów Młp.

### Stadiums

For fans of football there are two city stadiums which are used by two of the most famous teams – Resovia and Stal Rzeszów. Many football matches are played there.

### Parks

Rzeszów is filled with numerous beautiful green spots and it is also surrounded by forests. There are a few parks in the city center, the most famous are: Bulwary Park, Dąbrowskiego Park.

### Philharmony

For fans of classical music there is Artur Malawski Philharmony which is situated in city center. Podkarpackie Philharmony offers a very diverse and ambitious programme covering also performances of the best Polish artists.

### Theatre

Wanda Siemaszkowa Theatre in Rzeszów is one of the best theatre in Poland. Its repertoire is an eclectic mixture of Polish and foreign classics, but you can also see here contemporary drama. The Theatre cooperates with a number of directors connected with large cultural centers, such as Cracow, Warsaw, Wrocław.

## Leisure activities

---

### Tennis courts

There are a few scattered tennis courts scattered around Rzeszow. They offer good conditions for a reasonable price. In summer you can play in the open air, which is much cheaper.

### Skatepark

The skatepark is a meeting place for young people who are into rollerblading, skateboarding scooter and BMX cycling. It is located along the river and with lights on till 2 am, you can enjoy yourself till late hours at night.

### Snowpark

Located close to the skatepark, the snowpark is a perfect alternative for the lovers of extreme winter sports. It is the second city snowpark in Poland and the first one with artificial snowmaking system.

### Dirtpark

This is the obstacle course for extreme biking. Together with the skatepark and snowpark it is a part of the Extreme Sports Centre in Rzeszow where regular extreme sports competitions are organized.

### Street workout

Street Workout Rzeszow is an amateur sports team passionate about street workout and healthy lifestyle. They organize free and open to everyone workouts in the park along the river.

### Clubbing

Rzeszów offers a great number of clubs, discos, pubs etc. They are concentrated around the old market square, also in student campus. Every day students can discover new places. The average beer price pubs in Rzeszow is about 4–8 PLN. The entrance to discos typically costs 10–25 PLN on Fridays and Saturdays.

## Polish Cuisine

Jarzynowa	<b>Vegetable soup</b>
Kapuśniak	<b>Cabbage soup</b>
Krupnik	<b>Barley soup</b>
Ogórkowa	<b>Cucumber soup</b>
Pomidorowa	<b>Tomato soup</b>
Rosół	<b>Chicken stock</b>
Żurek	<b>Soup made from fermented rye flour</b>
Bigos	<b>Stewed dish made of sauerkraut and/or fresh cabbage, meat and mushrooms</b>
Gołąbki	<b>Stuffed cabbage leaves</b>
Klopsy	<b>Meat balls</b>
Krokiety	<b>Croquettes</b>
Kotlet drobiowy	<b>Chicken cutlet</b>
Kotlet mielony	<b>Rissole</b>
Kotlet schabowy	<b>Pork cutlet</b>
Łazanki	<b>Small square noodle with cabbage</b>
Naleśniki	<b>Pancake</b>
Omlet	<b>Omelet</b>
Placki ziemniaczane	<b>Potato pancakes</b>
Pieczeń wołowa/wieprzowa	<b>Roast beef/pork</b>
Pierogi ruskie	<b>Dumplings with potato and cheese stuffing;</b>
Pierogi z kapusta	<b>Dumplings with cabbage</b>
Pierogi z mięsem	<b>Dumplings with meat</b>
Pyzy	<b>Potato dumplings</b>

## 6. Useful addresses and telephone numbers

---

**Politechnika Rzeszowska**  
**Rzeszów University of Technology**

al. Powstańców Warszawy 12  
35-959 Rzeszów  
tel.: +48 17 865 1100,  
fax.: +48 17 854 1260  
e-mail: kancelaria@prz.edu.pl

**Dział Współpracy Międzynarodowej**  
**Department of International Cooperation**

buliding V, room no. 213/214  
al. Powstańców Warszawy 12  
35-959 Rzeszów, Poland  
Tel. + 48 17 865 865 1282  
e-mail: monikas@prz.edu.pl

**Samorząd studencki**  
**Student's Union**

ul. Akademicka 1/23  
35-084 Rzeszów  
D.S. „Promień”  
tel. +48 17 865 1357  
tel. +48 17 865 1661  
e-mail: biuro@ssprz.pl

**International Project's Association in Rzeszów "INPRO"**

Plac Dworcowy 1 (lok. 106 na 1 piętrze)  
35-001 Rzeszów  
facebook.com/goipro.org

## Useful addresses and telephone numbers

---

### **Visas**

#### **Ministry of Foreign Affairs of the Republic of Poland**

al. J. Ch. Szucha 23, 00-580 Warsaw  
tel. +48 22 523 9000  
e-konsulat@msz.gov.pl

#### **Centrum Kultury i Języka Polskiego dla Polaków z Zagranicy i Cudzoziemców POLONUS**

**Polish Language for Foreigners**  
al. Mjr. Kopisto 2b, 35-959 Rzeszów  
tel. +48 17 872 1277  
e-mail: polonus@univ.rzeszow.pl

#### **Przychodnia akademicka Student's clinic**

al. Tadeusza Rejtana 53, 35-326 Rzeszów  
tel. : +48 17 865 2000  
tel.: +48 17 865 2002  
ul. Hetmańska 21, 35-045 Rzeszów  
tel. +48 17 853 5281

#### **Miejskie Przedsiębiorstwo Komunikacyjne – Rzeszów Spółka z o.o. (City Buses)**

ul. Lubelska 54, 35-233 Rzeszów  
tel. +48 17 866 0400  
e-mail: firma@mpk.rzeszow.pl



## 7. Faculties

---

### **The Faculty of Civil and Environmental Engineering and Architecture**

ul. Poznańska 2,  
35-084 Rzeszów  
<https://wbisia.prz.edu.pl/en/>  
Erasmus+ coordinator:  
Joanna Krasoń, MA  
tel. +48 17 865 1728  
e-mail: jkras@prz.edu.pl

### **The faculty of Chemistry**

al. Powstańców Warszawy 6,  
35-959 Rzeszów  
tel. +48 17 856 1652,  
<https://wch.prz.edu.pl/en/>  
Erasmus+ coordinator:  
Grzegorz Poplewski, PhD  
tel. +48 17 865 1216  
e-mail: ichgp@prz.edu.pl

### **The Faculty of Mechanical Engineering and Aeronautics**

al. Powstańców Warszawy 8,  
35-959 Rzeszów  
tel. +48 17 865 1555  
e-mail: rm@prz.edu.pl  
<http://wbmil.portal.prz.edu.pl/en/>  
Erasmus+ coordinator:  
Andrzej Dzierwa, PhD  
tel. +48 17 865 1904  
e-mail: adktmiop@prz.edu.pl

## Faculties

---

### **The Faculty of Electrical and Computer Engineering**

ul. Wincentego Pola 2,  
35-959 Rzeszów  
tel. +48 17 865 1232,  
e-mail: [dwe@prz.edu.pl](mailto:dwe@prz.edu.pl)  
<https://weii.prz.edu.pl/en/>  
Erasmus+ coordinator:  
Sławomir Samolej, PhD  
tel. +48 17 865 14 86  
e-mail: [ssamolej@prz.edu.pl](mailto:ssamolej@prz.edu.pl)

### **The Faculty of Maths and Applied Science**

al. Powstańców Warszawy 8,  
35-959 Rzeszów  
tel. +48 17 854 0168,  
e-mail: [dwmifs@prz.edu.pl](mailto:dwmifs@prz.edu.pl)  
<https://wmifs.prz.edu.pl/en/>  
Erasmus+ coordinator:  
Sławomir Wolski, PhD  
tel. +48 17 865 1988  
e-mail: [wolan@prz.edu.pl](mailto:wolan@prz.edu.pl)

### **The Faculty of Management**

al. Powstańców Warszawy 10  
35-959 Rzeszów  
tel.: +48 17 865 1383,  
e-mail: [rz@prz.edu.pl](mailto:rz@prz.edu.pl)  
<https://wz.prz.edu.pl/en/>  
Erasmus+ coordinator:  
Paweł Perz, PhD  
tel. +48 17 865 1914  
e-mail: [pperz@prz.edu.pl](mailto:pperz@prz.edu.pl)

## Faculties

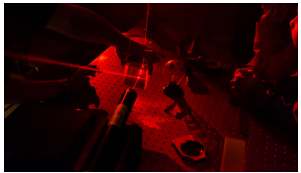
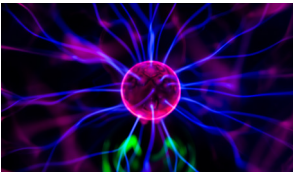
### The Faculty of Mechanics and Technology

ul. Kwiatkowskiego 4

37-450 Stalowa Wola

tel.: +48 15 844 8912

<https://wmt.w.prz.edu.pl/wydzial/kontakt>





KATEDRA GŁÓWNEJ Biblioteki

DOMENKARSKA

POWSTAŃCÓW WARSZAWSKI

POWSTAŃCÓW WARSZAWSKI

UL. POLSKICH CHIMIKÓW

UL. POLSKICH CHIMIKÓW

UL. POLSKICH CHIMIKÓW

UL. POLSKICH CHIMIKÓW

UL. POLSKICH CHIMIKÓW

UL. POLSKICH CHIMIKÓW

UL. POLSKICH FIZYKÓW

UL. POLSKICH FIZYKÓW

UL. POLSKICH FIZYKÓW

UL. POLSKICH FIZYKÓW

UL. POLSKICH FIZYKÓW

UL. POLSKICH FIZYKÓW

UL. POLSKICH FIZYKÓW

UL. POLSKICH FIZYKÓW

UL. POLSKICH FIZYKÓW

UL. POLSKICH FIZYKÓW

UL. POLSKICH FIZYKÓW

UL. POLSKICH FIZYKÓW

UL. POLSKICH FIZYKÓW

UL. POLSKICH FIZYKÓW

UL. POLSKICH FIZYKÓW

UL. POLSKICH FIZYKÓW

UL. POLSKICH FIZYKÓW

UL. POLSKICH FIZYKÓW

UL. POLSKICH FIZYKÓW

UL. POLSKICH FIZYKÓW

UL. POLSKICH FIZYKÓW

UL. POLSKICH FIZYKÓW

UL. POLSKICH FIZYKÓW

UL. POLSKICH FIZYKÓW

<b>A</b>	<b>WYDZIAŁ ELEKTROTECHNIKI I INFORMATYKI (DZIEKANAT)</b> FACULTY OF ELECTRICAL AND COMPUTER ENGINEERING (DEAN'S OFFICE)		
<b>B D E</b>	<b>WYDZIAŁ ELEKTROTECHNIKI I INFORMATYKI</b> FACULTY OF ELECTRICAL AND COMPUTER ENGINEERING		
<b>C G</b>	<b>WYDZIAŁ BUDOWY MASZYN I LOTNICTWA</b> FACULTY OF MECHANICAL ENGINEERING AND AERONAUTICS		
<b>F</b>	<b>OPICZYNA WYDAWNICZA, WYDZIAŁ ELEKTROTECHNIKI I INFORMATYKI, ZAKŁAD POLIGRAFII</b> PUBLISHING HOUSE, FACULTY OF ELECTRICAL AND COMPUTER ENGINEERING, PRINTING HOUSE		
<b>H</b>	<b>WYDZIAŁ CHEMICZNY (DZIEKANAT)</b> FACULTY OF CHEMICAL ENGINEERING (DEAN'S OFFICE)		
<b>J</b>	<b>ARCHIWUM, STUDIUM JĘZYKÓW OBCYCH, WYDZIAŁ ZARZĄDZANIA</b> FILE ROOM, DEPARTMENT OF FOREIGN LANGUAGES, FACULTY OF MANAGEMENT		
<b>K</b>	<b>WYDZIAŁ BUDOWNICTWA, INŻYNIERII ŚRODOWISKA I ARCHITEKTURY; WYDZIAŁ MATEMATYKI I FIZYKI STOSOWANEJ</b> FACULTY OF CIVIL AND ENVIRONMENTAL ENGINEERING, AND ARCHITECTURE; FACULTY OF MATHEMATICS AND APPLIED PHYSICS		
<b>L</b>	<b>WYDZIAŁ BUDOWY MASZYN I LOTNICTWA (DZIEKANAT), WYDZIAŁ MATEMATYKI I FIZYKI STOSOWANEJ (DZIEKANAT)</b> FACULTY OF MECHANICAL ENGINEERING AND AERONAUTICS (DEAN'S OFFICE), FACULTY OF MATHEMATICS AND APPLIED PHYSICS (DEAN'S OFFICE)		
<b>Ł</b>	<b>CENTRUM FIZJOTERAPII I SPORTU, HALA SPORTOWA, KLUB UCZELNIANY AZS</b> PHYSIOTHERAPY AND SPORTS CENTRE, SPORTS HALL, ACADEMIC SPORTS ASSOCIATION (AZS)		
<b>M</b>	<b>CENTRUM FIZJOTERAPII I SPORTU; WYDZIAŁ BUDOWNICTWA, INŻYNIERII ŚRODOWISKA I ARCHITEKTURY</b> PHYSIOTHERAPY AND SPORTS CENTRE, FACULTY OF CIVIL AND ENVIRONMENTAL ENGINEERING, AND ARCHITECTURE		
<b>O</b>	<b>CENTRUM STUDENCKIE, KLUB STUDENCKI „PLUS”, UCZELNIANE CENTRUM REKRUTACYJNE</b> STUDENT CENTRE, STUDENT CLUB „PLUS”, STUDENT RECRUITMENT CENTRE		
<b>P</b>	<b>WYDZIAŁ BUDOWNICTWA, INŻYNIERII ŚRODOWISKA I ARCHITEKTURY (DZIEKANAT, KOMPLEKS SAL WYKŁADOWYCH)</b> FACULTY OF CIVIL AND ENVIRONMENTAL ENGINEERING, AND ARCHITECTURE (DEAN'S OFFICE, LECTURE HALLS)		
<b>R</b>	<b>DOM ASYSTENTA</b> ASSISTANT RESIDENCE HALL		
<b>S</b>	<b>WYDZIAŁ ZARZĄDZANIA (DZIEKANAT, ZESPÓŁ SAL WYKŁADOWYCH)</b> FACULTY OF MANAGEMENT (DEAN'S OFFICE, LECTURE HALLS)		
<b>W</b>	<b>WYDZIAŁ BUDOWNICTWA, INŻYNIERII ŚRODOWISKA I ARCHITEKTURY (LABORATORIUM GEO-DROGOWE)</b> FACULTY OF CIVIL AND ENVIRONMENTAL ENGINEERING, AND ARCHITECTURE (GEO-ROAD LABORATORY)		
<b>V</b>	<b>REGIONALNE CENTRUM DYDAKTYCZNO-KONFERENCYJNE I BIBLIOTECZNO-ADMINISTRACYJNE (ADMINISTRACJA, BIBLIOTEKA, REKTORAT)</b> REGIONAL CENTRE FOR DIDACTICS, CONFERENCE, LIBRARY AND ADMINISTRATION (ADMINISTRATION, LIBRARY, RECTOR'S OFFICE)		
<b>1</b>	<b>DOM STUDENCKI „PROMIEN”</b> „PROMIEN” STUDENT HALL OF RESIDENCE		
<b>2</b>	<b>DOM STUDENCKI „NESTOR”</b> „NESTOR” STUDENT HALL OF RESIDENCE		
<b>3</b>	<b>DOM STUDENCKI „PINGWIN”</b> „PINGWIN” STUDENT HALL OF RESIDENCE		
<b>4</b>	<b>BUDYNEK „ARCUS” (ADMINISTRACJA, WYDZIAŁ ZARZĄDZANIA)</b> BUILDING „ARCUS” (ADMINISTRATION, FACULTY OF MANAGEMENT)		
<b>5</b>	<b>DOM STUDENCKI „AKAPIT”</b> „AKAPIT” STUDENT HALL OF RESIDENCE		
<b>6</b>	<b>DOM STUDENCKI „IKAR”, AKADEMICKIE RADIO I TELEWIZJA „CENTRUM”</b> „IKAR” STUDENT HALL OF RESIDENCE, ACADEMIC RADIO AND TV STATION „CENTRUM”		
<b>7</b>	<b>DOM STUDENCKI „ALCHEMIK”</b> „ALCHEMIK” STUDENT HALL OF RESIDENCE		
<b>8</b>	<b>PREINKUBATOR AKADEMICKI</b> ACADEMIC PREINCUBATOR		
<b>9</b>	<b>LABORATORIUM BADAWCZE „AEROPOLIS”</b> „AEROPOLIS” RESEARCH LABORATORY		
<b>10</b>	<b>KINO „HELIOS”</b> „HELIOS” CINEMA		
	<b>PRZYSTANKI AUTOBUSOWE</b> BUS STOPS		<b>POMNIK IGNACJA ŁUKASIEWICZA</b> IGNACY ŁUKASIEWICZ MONUMENT
	<b>BANKOMATY</b> CASH MACHINES		<b>REKRUTACJA</b> RECRUITMENT
	<b>PUNKTY GASTRONOMICZNE</b> RESTAURANTS		<b>GŁÓWNE WEJŚCIA</b> MAIN ENTRANCE
	<b>PUNKTY KSERO</b> PHOTOCOPI SERVICES		<b>SZLABANY</b> BODM BARRIERS
	<b>ALTANA Z GRILLEM „GRZYBEK”</b> „GRZYBEK” BARBEQUE ARBOUR		<b>PARKINGI</b> CAR PARKS
	<b>SIŁOWNIA NA WOLNYM POWIETRZU</b> OUTDOOR GYM		<b>BOISKA SPORTOWE</b> PLAYING FIELDS



---

**RZESZÓW UNIVERSITY OF TECHNOLOGY**



al. Powstańców Warszawy 12  
35-959 Rzeszów  
tel.: +48 17 865 1100  
[prz.edu.pl/en](http://prz.edu.pl/en)

---